

EMT Steel Set Screw Color Coded

Size Range: 1/2" - 4" 2 1/2" thru 4" are UL Listed & Approved for Use on Both EMT & Rigid

Product Series: SS - EMT Color Coded Compression Fittings

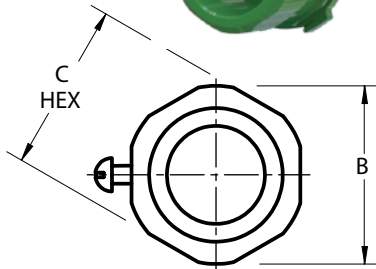
Material: Solid Alloy Steel Construction Powder Coated

Made in the USA

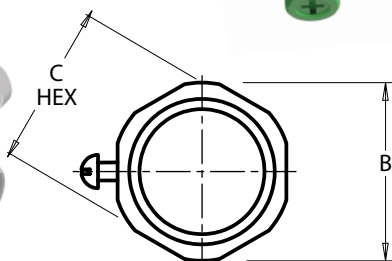
Industrial SPEC-grade



Fire alarms, security systems, fiber optics, high- and low-voltage circuits, data circuits: without a system, trying to tell their wires apart can be tricky. Color coded fittings makes it easy. Contractors avoid the hassels of spray painting and taping.



SPECTrum Steel EMT FITTINGS



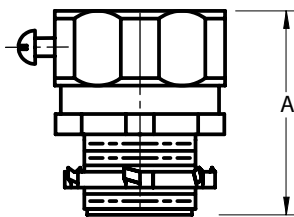
Powder Coating Will Not Flake or Crack.

2 1/2" & Larger are Furnished with 2 Set Hex Screws Per End

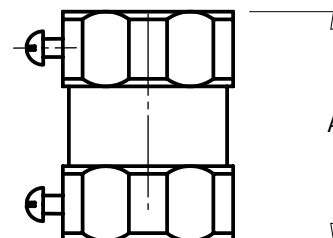
Steel Fitting Twice the Durability of Cast Products.

Color Coded Power Coated AMFICO EMT fittings consists of set screw, compression, insulated and non-insulated.

While red is the most commonly used, other colors offered include white, blue, green, yellow, black, and orange. *



Connector Furnished with a Steel Locknut



Connectors						Couplings					
Cat#*	Trade Size"	A	B	C	Wt./c	Cat#	Trade Size"	A	B	C	Wt./c
SS50US-R	1/2"	1-5/32"	63/64"	15/16"	10	SS60US-R	1/2"	1-1/2"	7/8"	27/32"	10
SS51US-R	3/4"	1-3/16"	1-7/32"	1-11/64"	14	SS61US-R	3/4"	1-1/2"	1-1/8"	1-1/16"	15
SS52US-R	1"	1-1/2"	1-1/2"	1-7/16"	23	SS62US-R	1"	1-7/8"	1-11/32"	1-13/32"	24
SS53US-R	1-1/4"	1-11/16"	2-7/8"	1-13/16"	40	SS63US-R	1-1/4"	2-3/16"	1-3/4"	1-11/16"	44
SS54US-R	1-1/2"	1-29/32"	2-5/32"	2-1/16"	52	SS64US-R	1-1/2"	2-19/32"	2-1/32"	1-31/32"	68
SS55US-R	2"	2-29/32"	2-21/32"	2-9/16"	80	SS65US-R	2"	2-11/16"	2-1/2"	2-13/32"	90
ERS250CONN-R	2-1/2"	2-3/8"	3-13/32"	3-1/4"	116	ERS250CPLG-R	2-1/2"	2-17/32"	3-13/32"	3-1/4"	113
ERS300CONN-R	3"	2-7/16"	4"	3-29/32"	160	ERS300CPLG-R	3"	2-5/8"	4"	3-29/32"	127
ERS350CONN-R	3-1/2"	2-7/16"	4-9/16"	4-13/32"	210	ERS350CPLG-R	3-1/2"	2-5/8"	4-9/16"	4-13/32"	156
ERS400CONN-R	4"	2-7/16"	5-3/32"	4-29/32"	240	ERS400CPLG-R	4"	2-5/8"	5-3/32"	4-29/32"	172

Compliances:

- Certified Made in the USA
- UL 514B
- NEMA Standard FB1
- Federal Standard A-A-50553
- UL Standards: 514B, 467
- Certified for MIL-STD 810 Sinusoidal Vibrations
- CSA Standard: C22.2 No. 18F
- RoHS Compliant
- REACH Compliant
- CA Prop 65 Compliant
- UNSPSC 39121434



Features and Options:

- Solid Alloy Steel Construction, Precision Machined
- Connector Furnished with Steel Locknut

Optional: Insulated Throat Bushing Available - Add Suffix "B"

* **Color Options Available** (minimum qty's may apply):
Remove Suffix "R" from Cat # and Add Suffix:

- O Orange Fiber Optics Circuits
- Y Yellow High Voltage Wiring
- BL Blue Low Voltage Wiring Data Com
- BK Black Architectural Design
- G Green Hospitals & Healthcare Critical Equipment
- W White Architectural Design

EMT Steel Compression Color Coded

Size Range: 1/2" - 4" 2 1/2" thru 4" are UL Listed & Approved for Use on Both EMT & Rigid

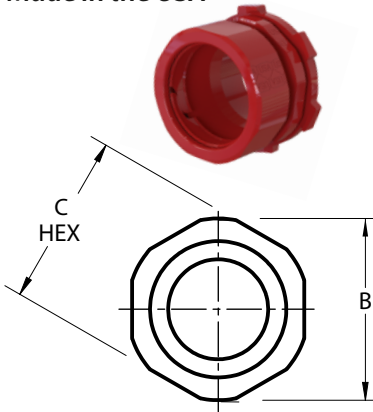
Product Series: EC - EMT Compression Connector

Material: Solid Alloy Steel Construction Powder Coated

Made in the USA

Industrial SPEC-grade

Fire alarms, security systems, fiber optics, high- and low-voltage circuits, data circuits: without a system, trying to tell their wires apart can be tricky. Color coded fittings makes it easy. Contractors avoid the hassels of spray painting and taping.

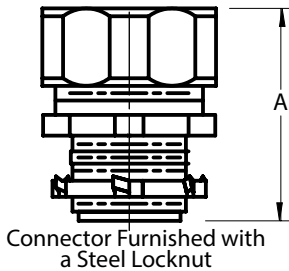


Powder Coating Will Not Flake or Crack.

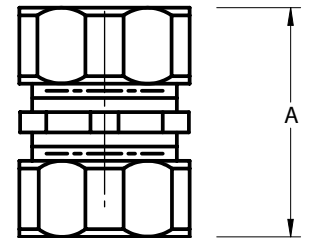
Steel Fitting Twice the Durability of Casr Products.

Color Coded Power Coated AMFICO EMT fittings consists of set screw, compression, insulated and non-insulated.

While red is the most commonly used, other colors offered include white, blue, green, yellow, black, and orange.*



Connector Furnished with a Steel Locknut



Connectors						Couplings					
Cat#*	Trade Size"	A	B	C	Wt./c	Cat#	Trade Size"	A	B	C	Wt./c
EC750US-R	1/2"	1-1/8"	1"	15/16"	8	EC760US-R	1/2"	1-3/8"	1"	15/16"	8
EC751US-R	3/4"	1-3/16"	1-7/32"	1-3/16"	12	EC761US-R	3/4"	1-7/16"	1-7/32"	1-3/16"	13
EC752US-R	1	1-5/16"	1-1/2"	1-7/16"	19	EC762US-R	1	1-17/32"	1-1/2"	1-7/16"	19
EC753US-R	1-1/4"	1-9/16"	1-7/8"	1-13/16"	30	EC763US-R	1-1/4"	1-27/32"	1-7/8"	1-13/16"	30
EC754US-R	1-1/2"	1-11/16"	2-5/32"	2-1/16"	46	EC764US-R	1-1/2"	2-1/16"	2-5/32"	2-1/16"	46
EC755US-R	2"	1-7/8"	2-7/8"	2-9/16"	55	EC765US-R	2"	2-1/4"	2-7/8"	2-9/16"	60
ERC250CONN-R	2-1/2"	3-1/8"	3-13/32"	3-1/4"	120	ERC250CPLG-R	2-1/2"	3-5/8"	3-13/32"	3-1/4"	133
ERC300CONN-R	3"	3-1/16"	4"	3-29/32"	165	ERC300CPLG-R	3"	3-11/16"	4"	3-29/32"	171
ERC350CONN-R	3-1/2"	3-1/16"	4-9/16"	4-13/32"	201	ERC350CPLG-R	3-1/2"	3-19/32"	4-9/16"	4-13/32"	205
ERC400CONN-R	4"	3-1/16"	5-3/32"	4-29/32"	237	ERC400CPLG-R	4"	3-5/8"	5-3/32"	4-29/32"	238

Compliances:

- Certified Made in the USA
- UL 514B
- NEMA Standard FB1
- Federal Standard A-A-50553
- UL Standards: 514B, 467
- Certified for MIL-STD 810 Sinusoidal Vibrations
- CSA Standard: C22.2 No. 18F
- RoHS Compliant
- REACH Compliant
- CA Prop 65 Compliant
- UNSPSC 39121434



Features and Options:

Solid Alloy Steel Construction, Precision Machined Connector Furnished with Steel Locknut-

Optional: Insulated Throat Bushing Available - Add Suffix "B"

* **Color Options Available** (minimum qty's may apply):
Remove Suffix "R" from Cat # and Add Suffix:

- O Orange Fiber Optics Circuits
- Y Yellow High Voltage Wiring
- BL Blue Low Voltage Wiring Data Com
- BK Black Architectural Design
- G Green Hospitals & Healthcare Critical Equipment
- W White Architectural Design