

## AC MC Saddle Connectors

**Industrial SPEC-grade**

Size Range: 3/8 - 1 1/4"

Product Series: ACMC Connectors Specification Grade

Material: Alloy Steel Construction Zinc Plated with a Chromate Finish

*Made in the USA*

Used to Secure Steel or Aluminum

Flexible **Metal Conduit** or **Armored Cable**, or **Metal Clad Cable** to Box or Enclosure.

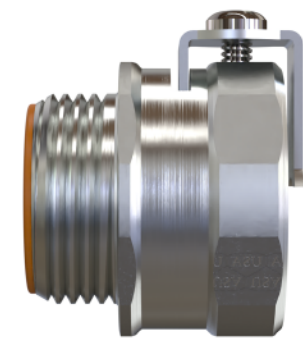
Furnished a UL Listed Insulated Throat Rated 150° & Industrial Grade Steel Locknut

Double Saddle for Redundant & Secure Grip to Cable and Safe Connection to Enclosure or Box

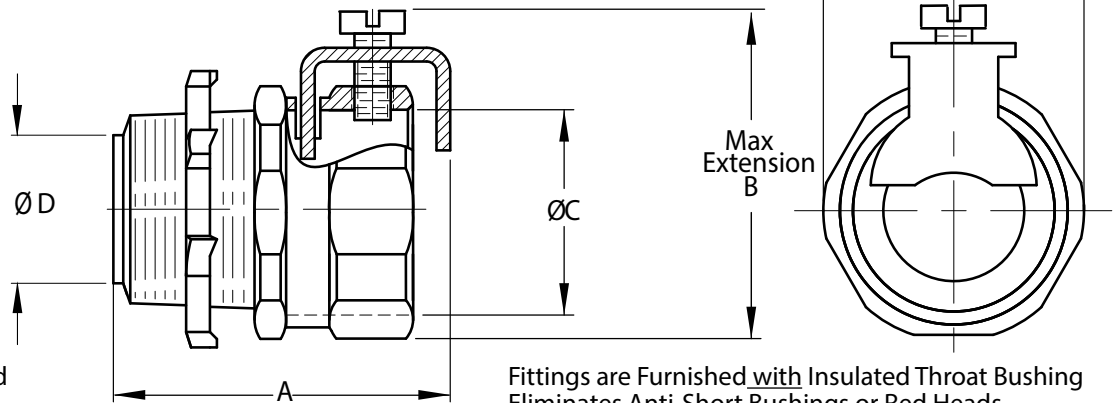
This Fitting with Machined Cut Steel Threads is Fully Reuseable

The **STRONGEST & MOST Durable** Saddle Connector Made

Twice the Strength and Durability of ALL Die Cast & Malleable Iron Fittings



Locknut Furnished



Fittings are Furnished with Insulated Throat Bushing Eliminates Anti-Short Bushings or Red Heads

Cat #	Trade Size	Knock Out	A	B	C Dia.	D Dia.	E	Cable Range		AC Cable Size		MC Cable Size		Wt. Per/C
								Min.	Max.	Min.	Max.	Min.	Max.	
ACMC 38	3/8"	1/2"	1-3/16"	1-1/2"	11/16"	3/8"	1"	.42	.69	14/2	8/2	14/2	8/2	8
ACMC 50	1/2"	1/2"	1-3/8"	1-11/16"	15/16"	9/16"	1-3/16"	.63	.94	8/2	6/4	10/4	6/4	10
ACMC 75	3/4"	3/4"	1-7/16"	2"	1-3/16"	3/4"	1-7/16"	.81	1.22	6/3	3/3	6/3	3/3	13
ACMC100	1"	1"	1-3/4"	2-1/2"	1-7/16"	1"	1-11/16"	1.08	1.47	4/3	2/0-3	4/3	2/0-3	22
ACMC125	1-1/4"	1-1/4"	1-7/8"	2-13/16"	1-11/16"	1-5/16"	1-15/16"	1.37	1.68	2/0-4	3/0-3	2/0-4	3/0-3	27

**Compliances:**

Certified Made in the USA

UL 514B

NEMA Standard FB1

Federal Standard A-A-50553

UL Standards: 514B, 467

CSA Standard: C22.2 No. 18F

RoHS Compliant

REACH Compliant

CA Prop 65 Compliant

UNSPSC 39121419



**Features:**

Precision Machined Alloy Steel Fitting Permits

Full Torque Values to Avoid Conduit Pullout.

Unlike Die Cast, Fitting Will Not Deform or Crack Under Load

Solid Steel Double Grip Tight Retaining Saddle

Safeguards the Conduit Jacket from Abrasion and

Reduces the Torque Required for a Secure Connection

Fully Machine ID for EZ WIRE PULL

Eliminating Sharp Binding Edges or Burrs to Snag Your Cable

Suitable for Dry Location Only

Suitable for Steel or Aluminum Cables